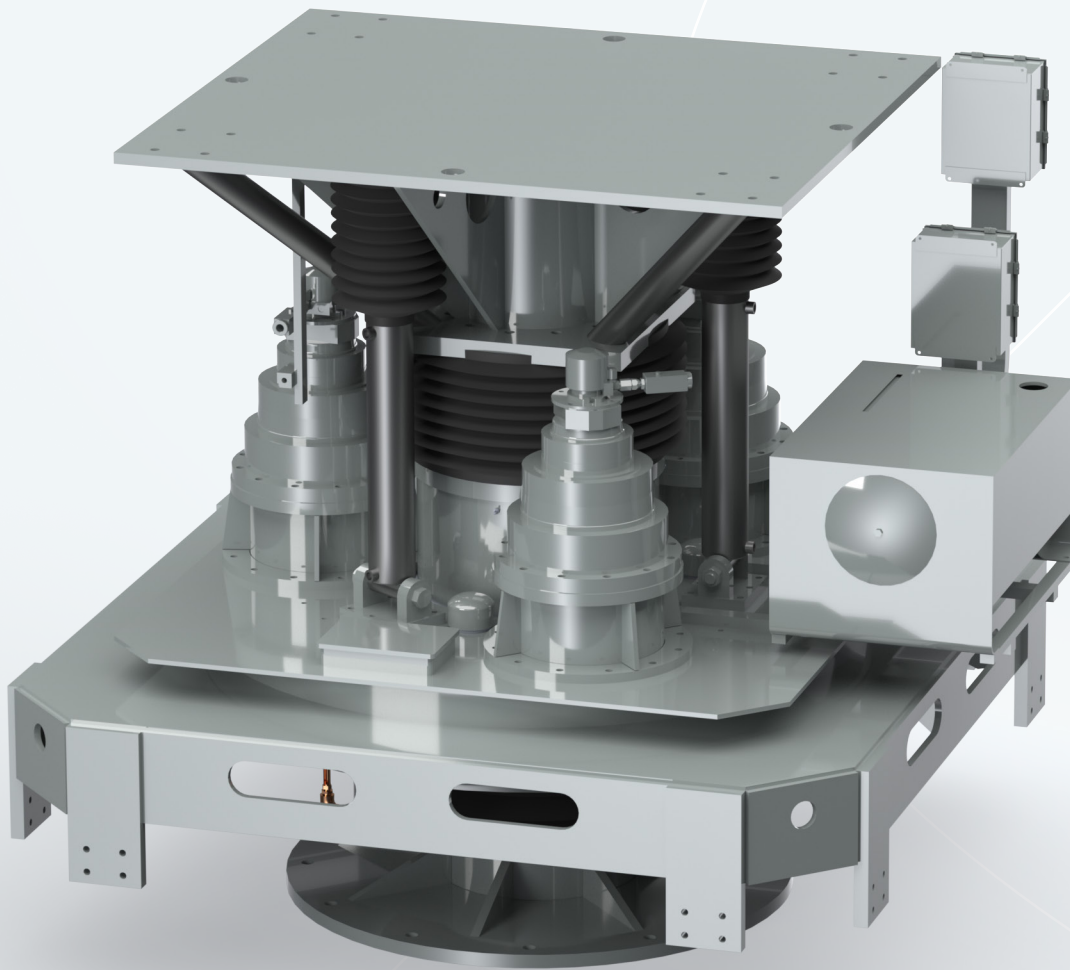


DBS MANUFACTURING

ENGINEERED FIRSTS | BUILT TO LAST



Retrofit | Drive Units

DBS MANUFACTURING, INC.

DBS Manufacturing is a successful, privately held business that designs, manufactures, and provides application engineering for products sold to original equipment manufacturers, end users, and municipal and industrial facilities around the world.

Retrofit Drive Units

DBS retrofit drive units offer a simple solution for renovating old clarifiers or thickeners. In many cases, replacing an old drive unit with a new DBS drive can be more cost-effective and faster than rebuilding the old one. With a new DBS drive, you benefit from the industry's best warranty, lower maintenance costs, higher reliability, and DBS Customer First service.

As a drop-in replacement, DBS retrofit drive units are designed to fit into the existing structure, requiring minimal, if any, modifications to surrounding components such as the bridge, rake cage, or output shaft. They are easy to install and upgrade your clarifier or thickener to modern standards with features like forged alloy steel gearing, a permanently lubricated pinion drive gearbox, and an accurate, dependable torque gauge—all contributing to lower maintenance costs and longer life.

Additionally, DBS also offers retrofits for rotary distributor center mechanisms. These replacements feature a rugged, easy to service “top-running” bearing. Replacing an existing mechanism with a DBS center mechanism adds modern features, such as motor-powered rotation for high dousing and variable flow applications. DBS rotary distributor center mechanisms also come with a 5-year “top-to-bottom” warranty.

With a new DBS drive, you get

- **the best warranty in the industry**
- **lower maintenance costs**
- **higher reliability**
- **customer first DBS service**

DBS HAS REPLACED NEARLY
ALL MAJOR MANUFACTURERS'
DRIVE UNITS.

Ahlstrom
Amwell
Andritz
Delkor
Denver
Dorr Oliver – Ovivo

Eimco – FLS
Envirex – Evoqua
Envirodyne
Enviroquip
FMC
Graver Water

Horsburgh & Scott
Infilco Degremont
Kusters
National Hydro
Passavant
Peabody Wells

PRE
Suez Environmental
Veolia Water
Systems
Walker Process
WesTech

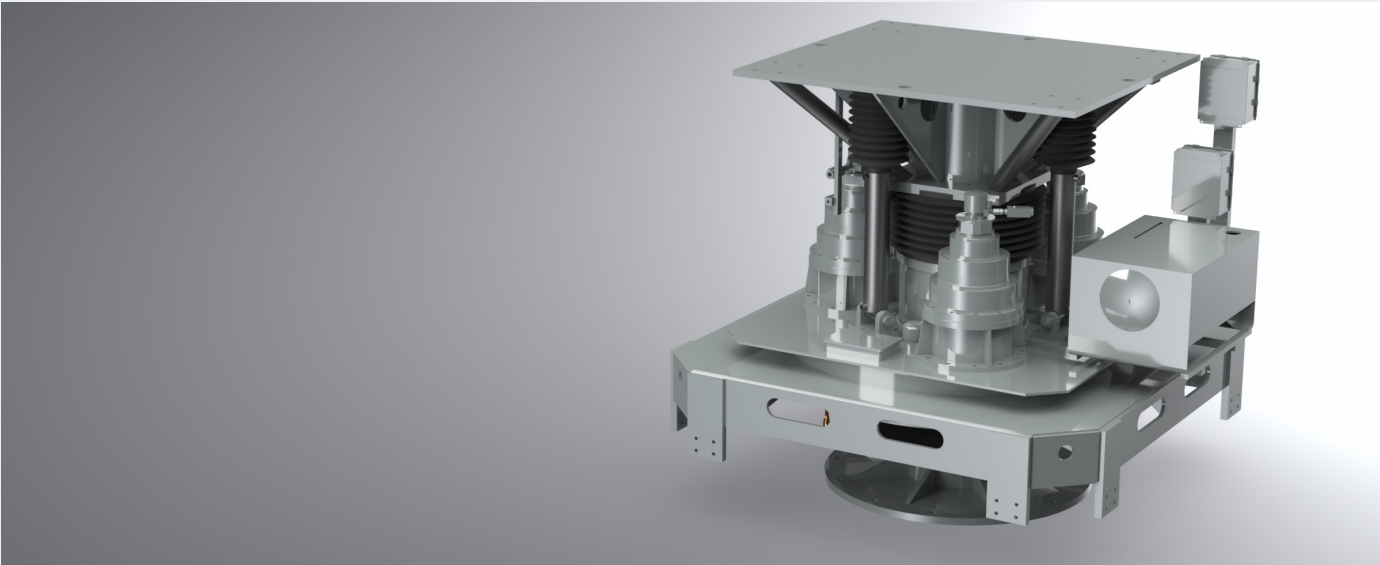
DBS HAS REPLACED ALL MAJOR
MANUFACTURERS' ROTARY
DISTRIBUTOR CENTER MECHANISMS.

**GENERAL FILTER
WALKER PROCESS
DORR OLIVER
EIMCO**

DBS RETROFIT DRIVE UNITS

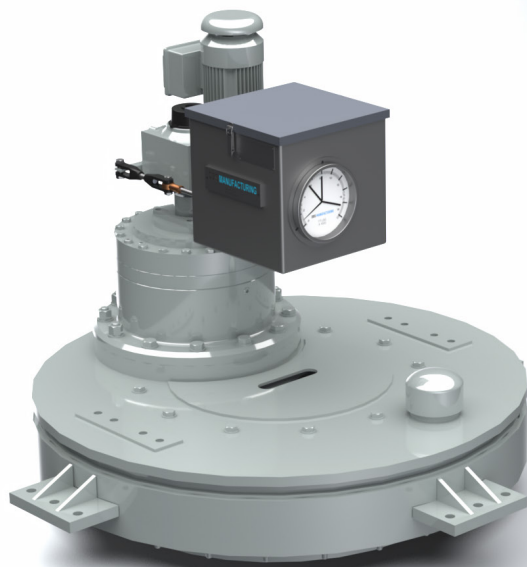
DBS retrofit drive units are dimensionally identical to the original manufacturers' gearboxes, making it easy to install the new DBS drive with little modification, if any, to existing mechanical components.

If the retrofit drive you need is not listed below, please visit dbsmfg.com/retrofits for a more comprehensive list.



D60-DH3-L retrofit for a Dorr-Oliver 96S2

Dorr-Oliver 30S1 on a Ø100 ft municipal secondary clarifier.....	D30-AE
<i>OCEAN CITY, MD</i>	
Dorr-Oliver 48S1 on a Ø110 ft municipal secondary clarifier.....	D42-BF
<i>PETERSBURG, VA</i>	
Dorr-Oliver W60 on a Ø65 ft municipal Hydrotreator.....	D42-BE
<i>NORTH MIAMI BEACH, FL</i>	
Dorr-Oliver 122S3 on a Ø250 ft pulp and paper effluent.....	D80-EH4
<i>BREWTON, AL</i>	
Dorr-Oliver 48A on a Ø75 ft white liquor clarifier	S44-CF-L
<i>OGLETHORPE, GA</i>	
Dorr-Oliver 96S2 on a Ø100 ft red mud thickener	D60-DH3-L
<i>SURINAME, SOUTH AMERICA</i>	
Dorr-Oliver 36A on a Ø30 ft lime mud agitator.....	M340-15
<i>OGLETHORPE, GA</i>	
Dorr-Oliver 122S2 on a Ø220 ft pulp and paper clarifier.....	D80-EH4
<i>EAST MILLINOCKET, ME</i>	
Dorr-Oliver S800 on a Ø320 ft pulp and paper effluent clarifier.....	D120-FH2
<i>JESUP, GA</i>	

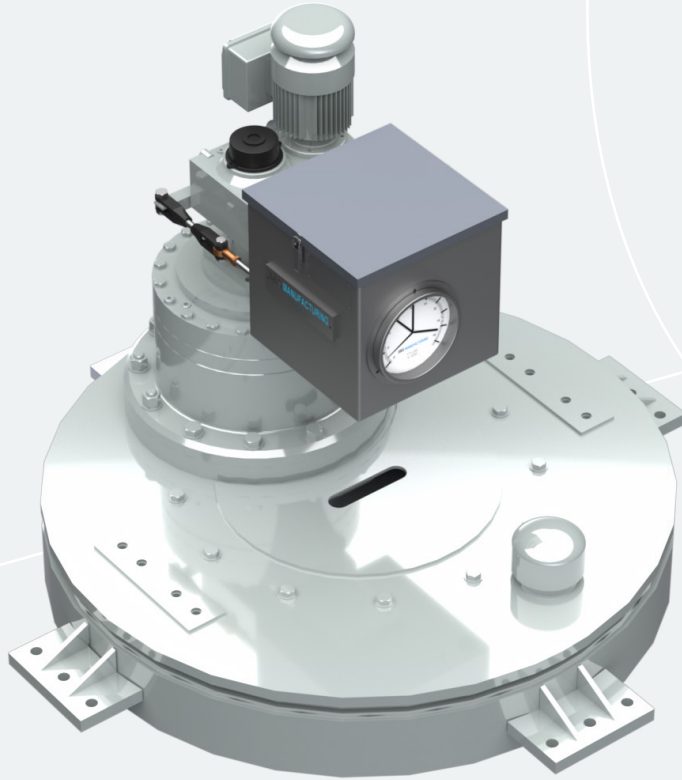


D30-BE retrofit for an Envirex H40HT

Eimco C60B on an industrial wastewater clarifier..... <i>NEENAH, WI</i>	D60-DE
Eimco C108B2 on a Ø200 ft pulp and paper effluent..... <i>WISCONSIN RAPIDS, WI</i>	D80-DH4
Eimco C60/C70 on a Ø180 ft industrial solids contact clarifier..... <i>GEORGETOWN, SC</i>	D60-DF-D60
Envirex 230 on a Ø70 ft municipal trickling filter..... <i>MOULTRIE, GA</i>	RD-24M
Envirex F60/R18 on an Ø80 municipal clarifier..... <i>COFFEYVILLE, KS</i>	S34-BF-D34
Envirex H40HT on a Ø65 ft gravity thickener..... <i>NORFOLK, VA</i>	D30-BE
Envirex H80LT on a Ø180 ft municipal primary clarifier..... <i>COLUMBUS, OH</i>	D42-CF2
Envirex 15 hp Floating Aerator..... <i>CHESTER, VA</i>	NSA2-15
Horsburg & Scott 52 on a Ø105 ft municipal primary clarifier..... <i>DURANT, OK</i>	D30-BE
Link Belt 7MK100 on a municipal salt water pump..... <i>SEWAREN, NJ</i>	M440
Peabody Welles 62-40 hp Simcar Aerator..... <i>AMHERST, MA</i>	NSA3-40B
Walker Process S60X on a Ø130 ft municipal final clarifier..... <i>CLEVELAND, OH</i>	D42-BFS
Walker 80" on a Ø155 ft municipal primary clarifier..... <i>TULSA, OK</i>	D60-CF
Walker Process mixers in a municipal secondary clarifier..... <i>LAWRENCE, KS</i>	MRM87-3

DBS[®] MANUFACTURING

- Clarifier & Thickener Drives
- Hyperbolic Mixers
- Low-Speed Surface Aerators
- Rotary Distributor Center Mechanisms



Retrofit Drive Units | D-SERIES
MODEL D30-BE

dbsmfg.com
404.768.2131
sales@dbsmfg.com

45 South Woods Parkway
Atlanta, Georgia 30354