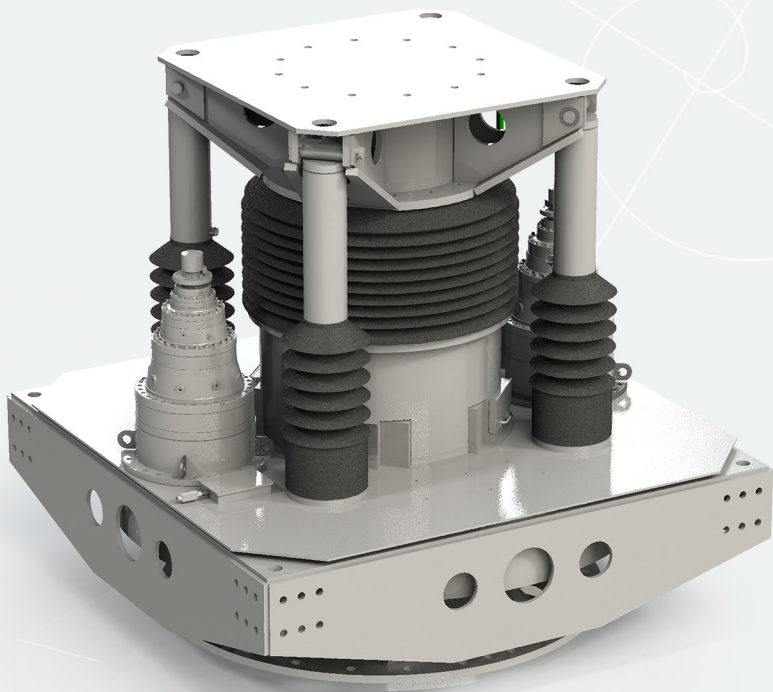


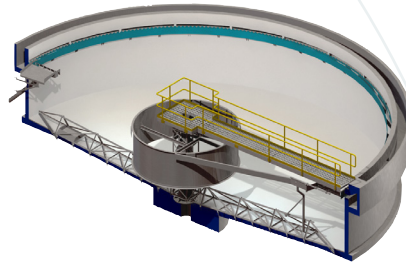
INDUSTRIAL DRIVES



ENGINEERED FIRSTS | BUILT TO LAST

OVERVIEW

With over 40 years of experience in designing and building drive units, DBS will provide you with the right solution for every application. Our Industrial Drives are designed for pier mounted or bridge mounted installations, and all can be fitted with lifting capabilities.



FEATURES

- Forged alloy steel main gears designed for 20 years of life calculated per AGMA 2001-D04
- Precision four-point-contact main bearing, with a 10-year warranty
- Accurate torque measurement for process control 4-20 mA and visual output
- Alarm and cutoff switches and maximum torque limiting via pressure relief valve or shear pin
- Designed for minimum maintenance with permanently lubricated intermediate reducers and labyrinth seals on the main gear
- Variable speed



TORQUE CAPACITY - INDUSTRIAL DRIVE UNITS

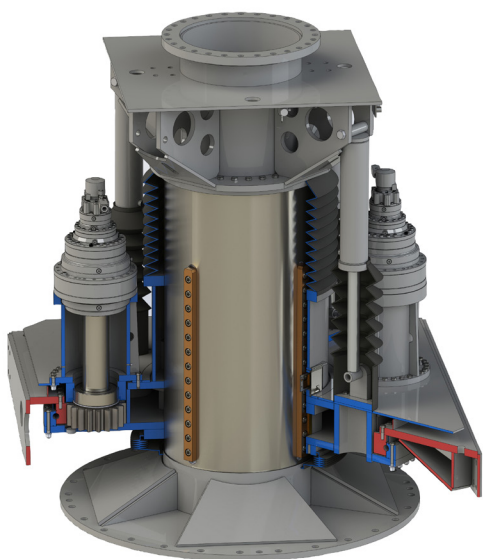
MODEL	D-SERIES CENTER PIER MOUNTED DRIVES					
	DUTY TORQUE		ALARM TORQUE		YIELD TORQUE	
	FT-LBF	N-M	FT-LBF	N-M	FT-LBF	N-M
D80-E	700,000	950,000	350,000	480,000	1,200,000	1,630,000
D80-E-2	1,400,000	1,900,000	700,000	950,000	1,900,000	2,580,000
D80-E-3	2,100,000	2,850,000	1,050,000	1,420,000	3,600,000	4,880,000
D80-E-4	2,800,000	3,800,000	1,400,000	1,900,000	4,800,000	6,510,000
D104-G-2	3,000,000	4,070,000	1,500,000	2,030,000	6,630,000	9,000,000
D104-G-3	3,750,000	5,090,000	1,880,000	2,550,000	6,630,000	9,000,000
D104-G-4	5,000,000	6,780,000	2,500,000	3,390,000	8,840,000	12,000,000
D120-H-2	2,640,000	3,580,000	1,320,000	1,790,000	6,660,000	9,030,000
D120-H-3	3,960,000	5,370,000	1,980,000	2,690,000	9,990,000	13,540,000
D120-H-4	5,280,000	7,160,000	2,640,000	3,580,000	13,320,000	18,060,000
D120-H-5	8,750,000	11,870,000	4,380,000	5,930,000	16,650,000	22,570,000
D120-H-6	10,500,000	14,240,000	5,250,000	7,120,000	19,980,000	27,090,000

MODEL	S-SERIES CENTER PIER MOUNTED DRIVES					
	DUTY TORQUE		ALARM TORQUE		YIELD TORQUE	
	FT-LBF	N-M	FT-LBF	N-M	FT-LBF	N-M
S70-E	500,000	680,000	250,000	340,000	750,000	1,020,000
S70-E-2	1,000,000	1,360,000	500,000	680,000	1,500,000	2,040,000
S70-E-3	1,500,000	2,030,000	750,000	1,020,000	2,250,000	3,050,000
S70-E-4	2,000,000	2,710,000	1,000,000	1,360,000	3,000,000	4,070,000

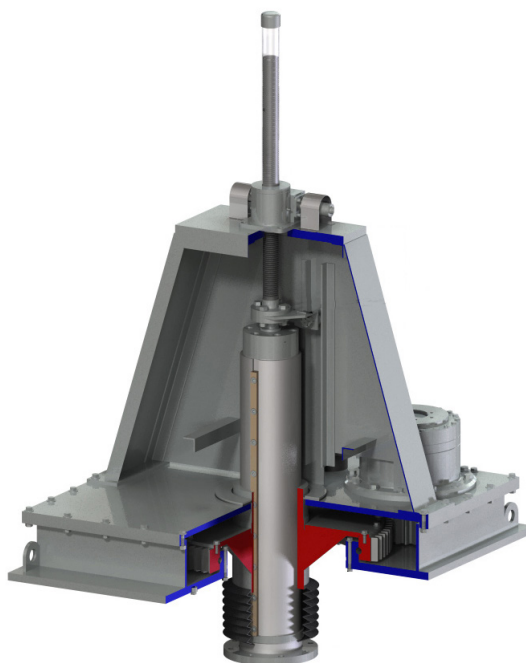
LIFT MECHANISM OPTIONS

The DBS lift mechanism provides the ability to raise and lower the thickener rakes up to 36" (910 mm). Lift mechanisms are equipped with upper and lower limit switches and a 4-20 mA vertical position transducer.

D SERIES LIFT MECHANISM



S SERIES LIFT MECHANISM

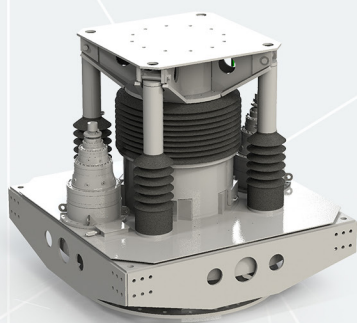


OPTIONAL FEATURES

- Bi-directional operation (available for F and H-type primary reducers)
- Loss motion switch
- Explosion proof switches
- Special coating
- Oil heater (available for F and H-type primary reducers and main gear housing)
- Special electric motor
- Oil temperature switch
- Oil level switch

D SERIES lift mechanism operates by raising the entire drive unit and is fully contained within the drive unit. In most cases, the installation of a DBS thickener drive unit with a lift mechanism is no more complicated than a normal non-lifting thickener drive unit.

S SERIES lift mechanism operates by raising and lowering the output drive shaft. The DBS lift design does not require the screwjack to rotate, therefore there are no rotary electrical slip rings to maintain.



INDUSTRIAL DRIVE UNIT | PIER MOUNTED
D104-GH2-L

- CLARIFIER & THICKENER DRIVES
- RETROFITS
- LOW-SPEED SURFACE AERATORS
- ROTARY DISTRIBUTOR CENTER MECHANISMS

DBS MANUFACTURING

404.768.2131

engineering@dbsmfg.com
dbsmfg.com
45 SouthWoods Parkway
Atlanta, Georgia. 30354