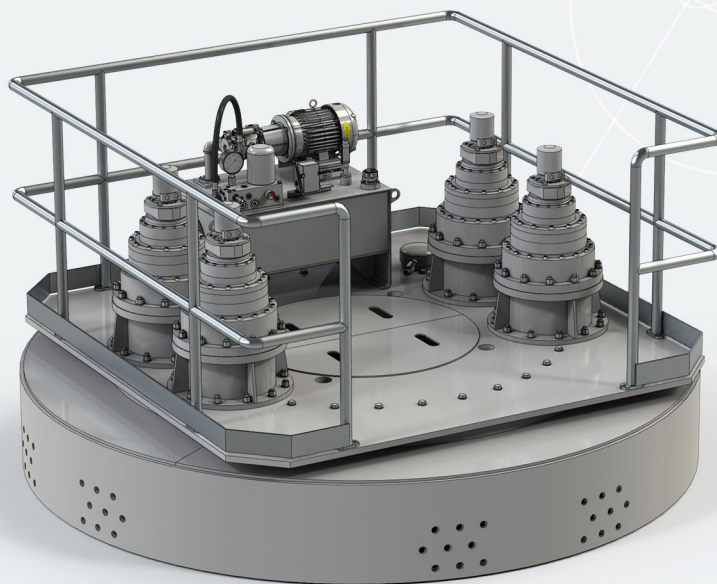


RETROFIT | DRIVE UNITS



ENGINEERED FIRSTS | BUILT TO LAST

RETROFIT APPLICATIONS

With over 40 years experience designing and building drive units, DBS has the expertise to provide the right solution for every application. DBS manufactures clarifier and thickener drives that are direct bolt-in replacements for drives built by many other companies such as Dorr-Oliver, Eimco, Envirex, FMC, National Hydro, Walker Process and others.

With a new DBS drive, you get:

the **best** warranty
in the industry

lower maintenance costs

higher reliability

"customer first" DBS service

DBS retrofit drive units are an economical solution to renovating an old clarifier or thickener. In fact, the total cost of replacing an old drive unit with a new DBS drive may be less than the cost of rebuilding the old drive. With a new DBS drive, you get the best warranty in the industry, lower maintenance costs, higher reliability, and DBS "customer first" service.

Dimensionally identical to the original manufacturers' gearbox, DBS retrofit drives "bolt right in" without any modification to the existing mechanical components like the bridge, drive cage or driveshaft.

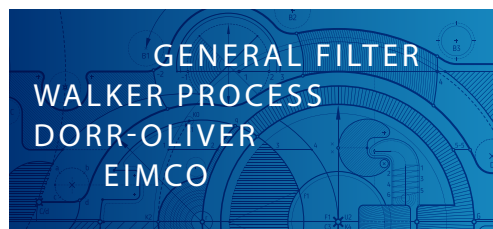
They're easy to install, and DBS retrofit drive units upgrade the clarifier or thickener to modern standards with forged alloy steel gearing, permanently lubricated pinion drive gearbox, and an accurate, dependable torque gauge, all of which provide lower maintenance costs and longer life.

DBS also makes bolt-in replacements for rotary distributor center mechanisms, which feature a rugged "top running" bearing that's easy to access and service.

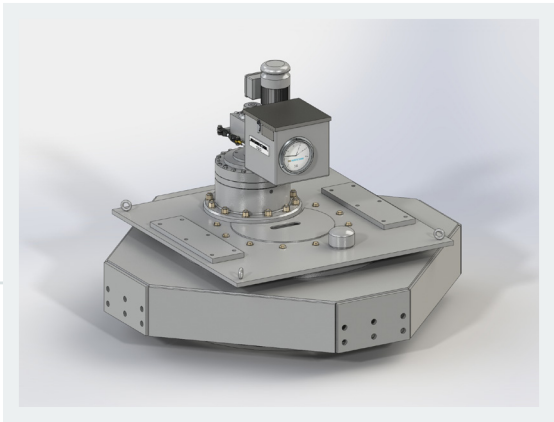
Directly replacing an existing mechanism with a DBS center mechanism adds modern features, such as motor powered rotation for high dousing and variable flow applications. Plus, DBS rotary distributor center mechanisms are covered by a 5-year "top to bottom" warranty.



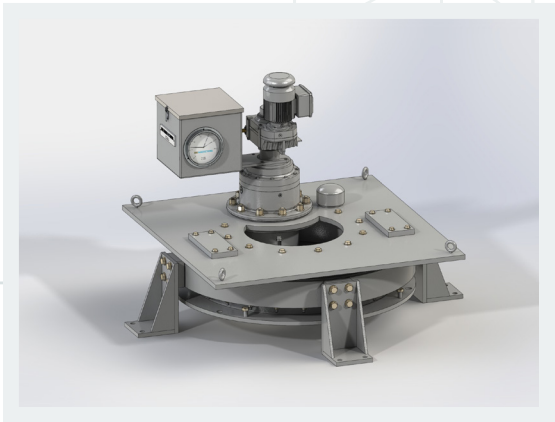
DBS HAS REPLACED
NEARLY ALL MAJOR
MANUFACTURERS'
DRIVE UNITS.



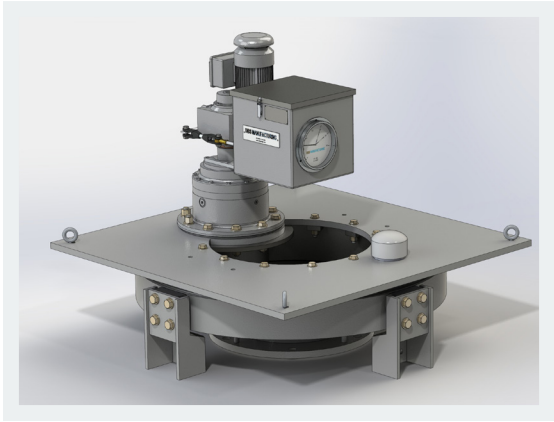
DBS HAS
REPLACED MAJOR
MANUFACTURERS'
ROTARY
DISTRIBUTOR
CENTER
MECHANISMS



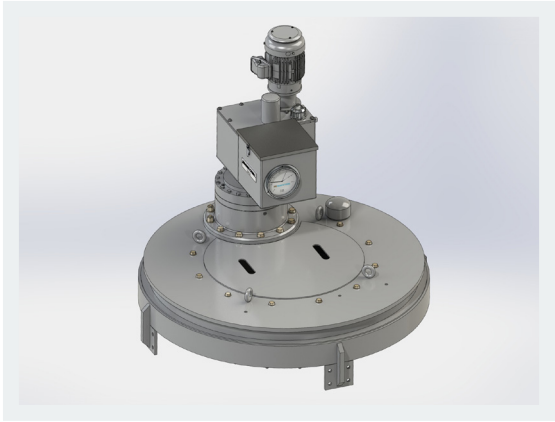
D30-BE retrofit for Horsburg & Scott 52 on a Ø105 ft municipal primary clarifier
DURANT, OK



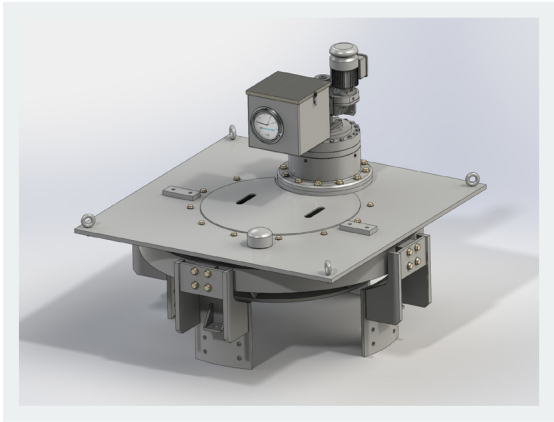
D30-AE retrofit for Smith & Loveless 214 on a Ø78 ft industrial suction clarifier
SOUTH CHARLESTON, WV



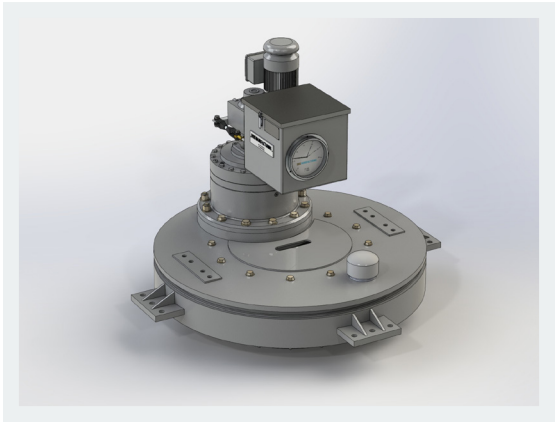
D30-AE retrofit for Dorr-Oliver 30S1 on a Ø100 ft municipal secondary clarifier
OCEAN CITY, MD



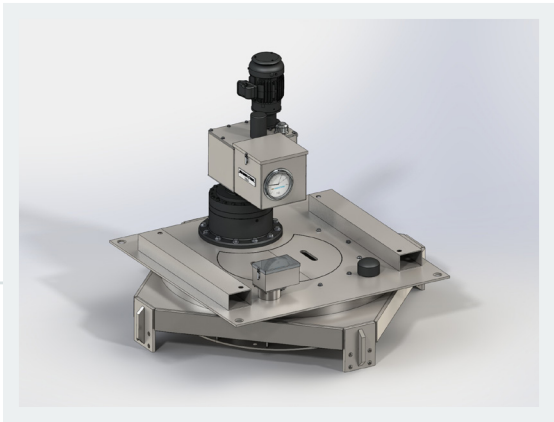
D42-BF retrofit for Dorr-Oliver 48S1 on a Ø110 ft municipal secondary clarifier
PETERSBURG, VA



D42-BE retrofit for Dorr-Oliver W60 on a Ø65 ft municipal Hydrotreator
NORTH MIAMI BEACH, FL

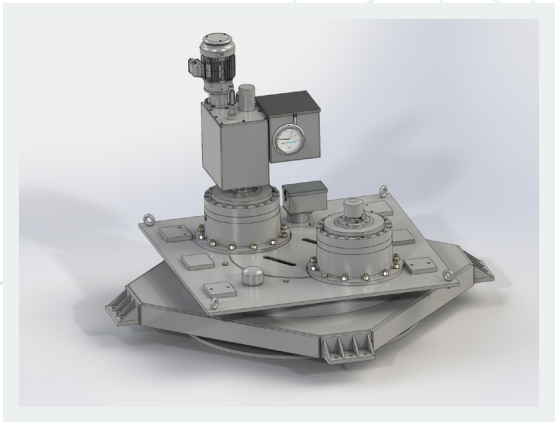


D30-BE retrofit for Envirex H40HT on a Ø65 ft gravity thickener
NORFOLK, VA



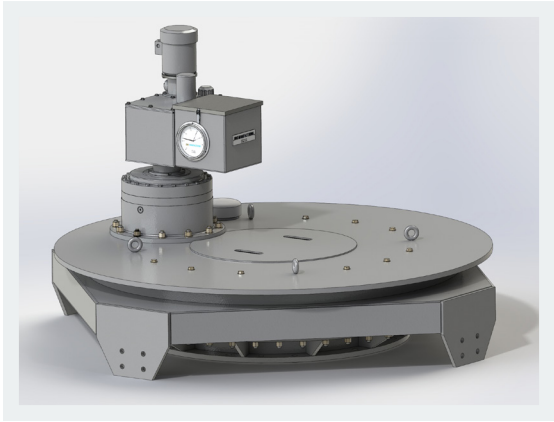
D42-BFS retrofit for Walker Process S60X on a Ø130 ft municipal final clarifier

CLEVELAND, OH



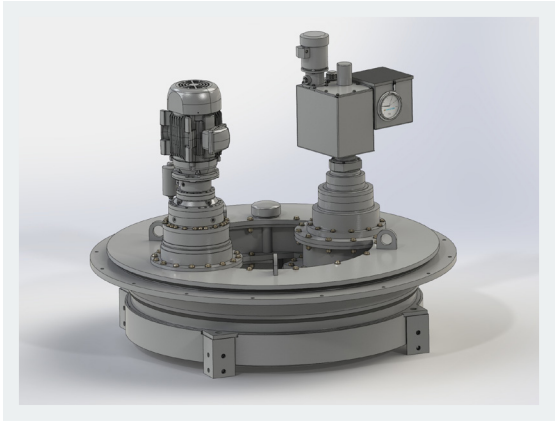
D42-CF2 retrofit for Envirex H80LT on a Ø180 ft municipal primary clarifier

COLUMBUS, OH



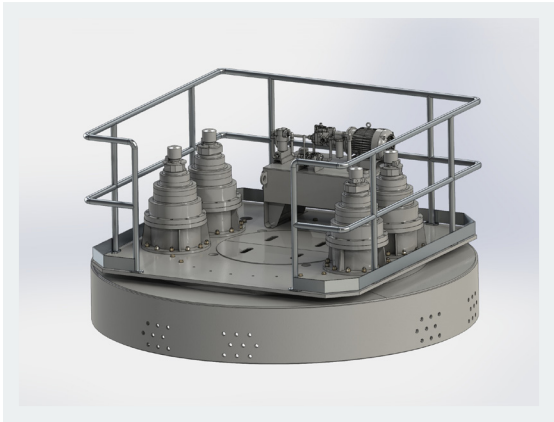
D60-CF retrofit for Walker 80" on a Ø155 ft municipal primary clarifier

TULSA, OK



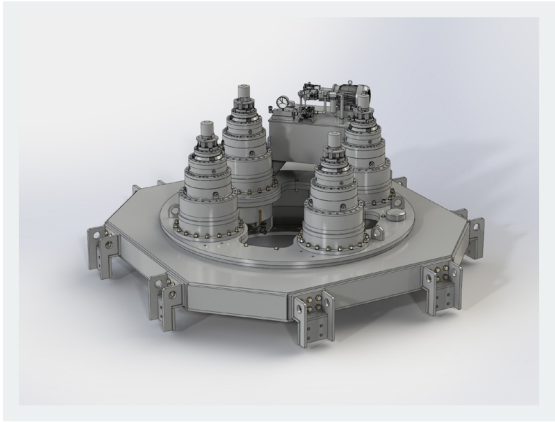
D60-DF-D60 retrofit for Eimco C60/C72P on a Ø180 ft industrial solids contact clarifier

GEORGETOWN, SC



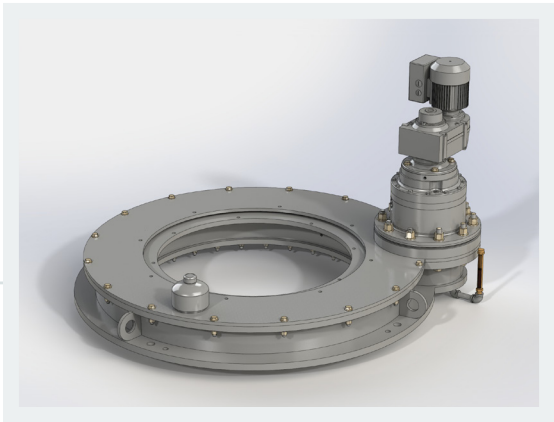
D80-DH4 retrofit for Eimco C108B2 on a Ø200 ft pulp and paper effluent

WISCONSIN RAPIDS, WI



D80-EH4 retrofit for Dorr-Oliver 122S3 on a Ø250 ft pulp and paper effluent

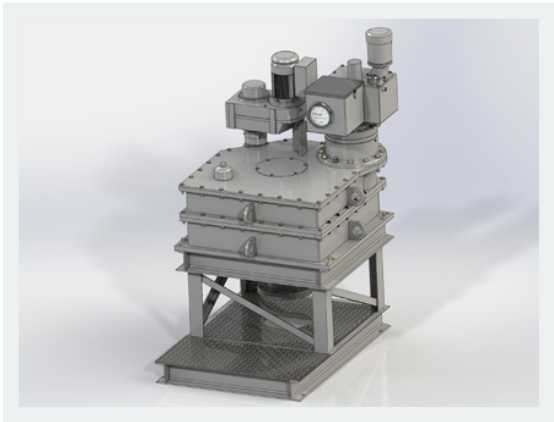
BREWTON, AL



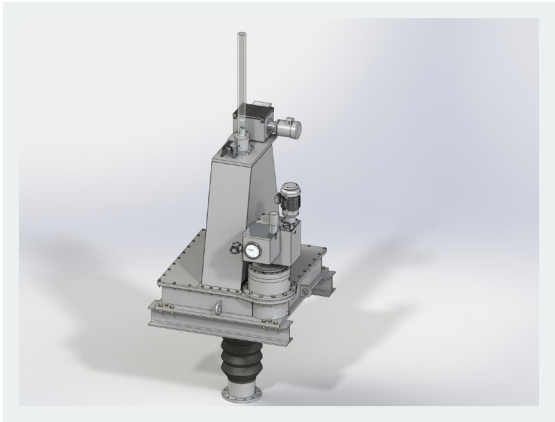
M440 retrofit for Link Belt 7MK100 on a municipal salt water pump SEWAREN, NJ



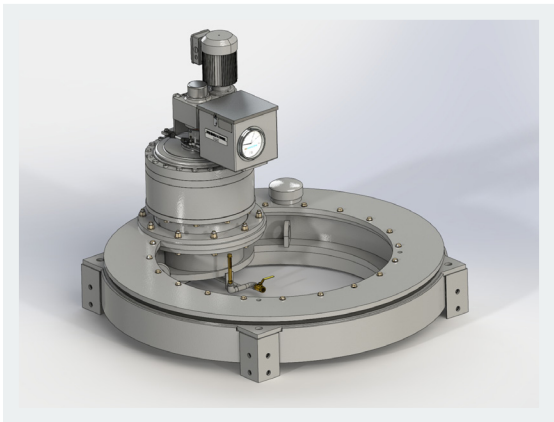
MRM87-3 retrofit for Walker Process mixers in a municipal secondary clarifier LAWRENCE, KS



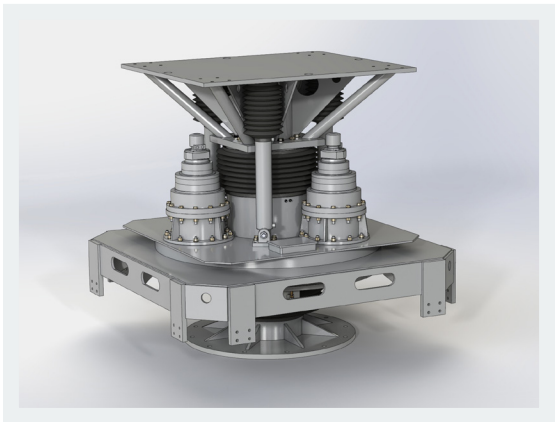
S34-BF-D34 retrofit for Envirex F60/R18 on a Ø80 ft municipal clarifier COFFEYVILLE, KS



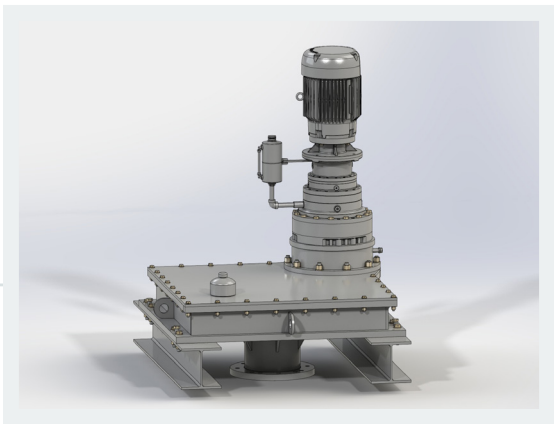
S44-CF-L retrofit for Dorr-Oliver 48A on a Ø75 ft white liquor clarifier OGLETHORPE, GA



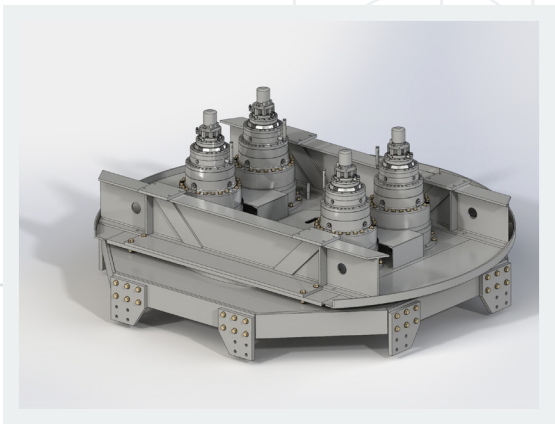
D60-DE retrofit for Eimco C60B on an industrial wastewater clarifier NEENAH, WI



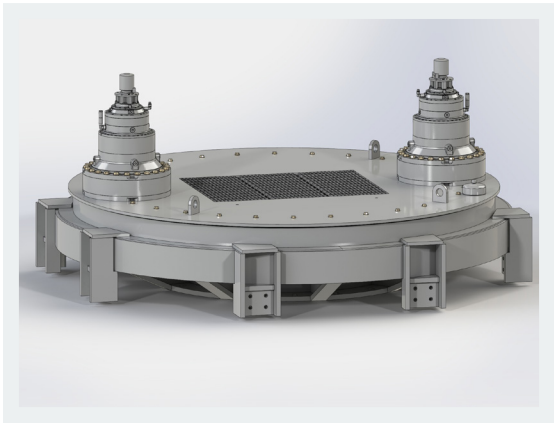
D60-DH3-L retrofit for Dorr-Oliver 96S2 on a Ø100 ft red mud thickener SURINAME, SOUTH AMERICA



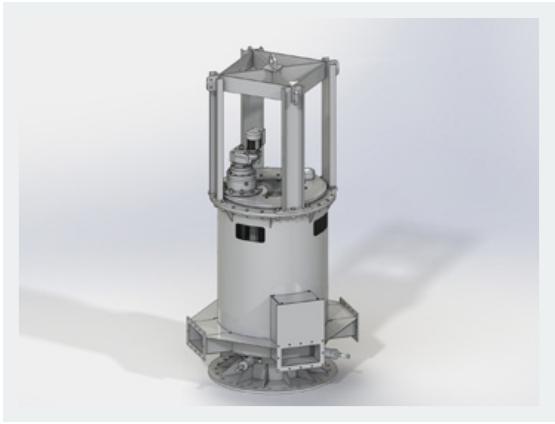
M340-15 retrofit for Dorr-Oliver 36A on a Ø30 ft lime mud agitator OGLETHORPE, GA



D80-EH4 retrofit for Dorr-Oliver 122S2 on a Ø220 ft pulp and paper clarifier EAST MILLINOCKET, ME



D120-FH2 retrofit for Dorr-Oliver S800 on a Ø320 ft pulp and paper effluent clarifier JESUP, GA



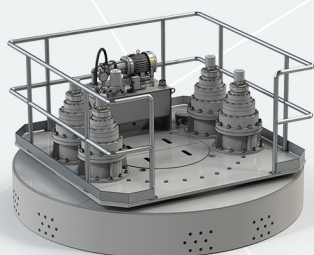
RD-24M retrofit for Envirex 230 on a Ø70 ft municipal trickling filter MOULTRIE, GA



NSA3-40B retrofit for Peabody Welles 62-40HP Simcar Aerator AMHERST, MA



NSA2-15 retrofit for Envirex 15 HP Floating Aerator CHESTER, VA



RETROFIT DRIVE UNITS | EIMCO
C108B2

- CLARIFIER & THICKENER DRIVES
- RETROFITS
- LOW-SPEED SURFACE AERATORS
- ROTARY DISTRIBUTOR CENTER MECHANISMS

404.768.2131

DBS MANUFACTURING

engineering@dbsmfg.com
dbsmfg.com
45 SouthWoods Parkway
Atlanta, Georgia. 30354